

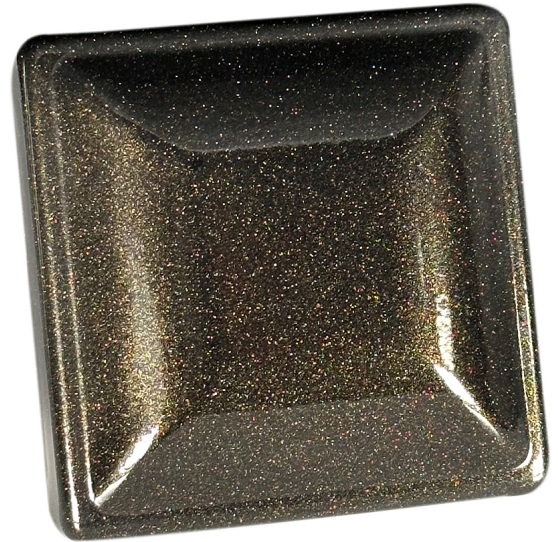


## **GOLD DUST SHOTS015**

Your imagination is your limitation, add Gold Dust to your colors!

Works great with all powder paints and colors, especially darker and translucent colors! Add it to your clear coat for even more depth.

Just mix, shake, and paint!



### **FEATURES:**

- Micron Size: 10-100  $\mu\text{m}$
- Temperature Limit 400°F
- Recommended Pour: 1 shot per 1lb of solid color / 1 shot per 2lbs of clear coat

**SCAN FOR  
MORE INFO**



### **APPLICATIONS:**

- Wheels both aluminum and steel
- Gas tanks
- Engine components (other than headers)
- Motorcycle/bike frames
- Appliance fixtures
- Farm/outdoor equipment
- Outside furniture
- And more

### **PURCHASE HIGHLIGHTS:**

- Precise Measurements
- Lab Tested Formulation
- Easy Blending
- Convenient Packaging

**Shop all quality coatings, equipment, and more at:**  
**[www.columbiacoatings.com](http://www.columbiacoatings.com)**